



FAUNISTIC RECORDS FROM SLOVAKIA

Lepidoptera: Tineidae

Trichophaga scandinaviella ZAGULAJEV, 1960

Galanta [7872], 27.VIII.2013, 1 ♂, 9.IX.2017, 1 ♂, 27.VII.2012, 1 ♀, R. Štefanovič leg., det. & coll.; Veľký Grob [7771], 21.VIII.2015, 1 ♂, Z. Tokár leg. & coll.

New species for Slovakia and for the Central Europe. Before this record, the species was known only from Lithuania, Latvia, Sweden, Finland, Denmark, Norway and from the European part of Russia (ZAGULAJEV 1960, BENGTTSSON 2002).

Trichophaga scandinaviella (Figs 1A-F, H) strongly resembles *Trichophaga tapetzella* (Linnaeus, 1758) (Figs 1G, I) by its habitus, so that comparison of the copulatory apparatus is required for its proper determination (JALEVA & KYRKI 1980). In Norway, the species was reared from animal origin debris of Eurasian eagle-owl (*Bubo bubo*). This micro-moth is probably associated with the nests of predatory (raptor) birds, where it uses their nest debris as feed.

The specimen from Galanta (SW Slovakia), has been collected on the balcony of an apartment house during a moth-collection night. UV light was used for moth attraction. Since the Long-eared owl (*Asio otus*) nests are situated near by the moth-collection site, it is quite probable that *T. scandinaviella* develops in the nest-debris of these owls.

References:

- BENGTTSSON, B. Å. 2002. *Trichophaga scandinaviella* Spybollsmal. ArtDatabanken, SLU 2005.
- JALAVA, J. & KYRKI, J. 1980. Notes on the taxonomy and distribution of western Palaearctic *Trichophaga* species (Lepidoptera, Tineidae). *Notulae Entomologicae* 60: 107-110.
- ЗАГУЛЯЕВ, А. К. [ZAGULAJEV, A. K.] 1960. Настоящие моли (Tineidae). Фауна СССР 78: 1-268.

Roland Štefanovič

Slovak Entomological Society, Bratislava

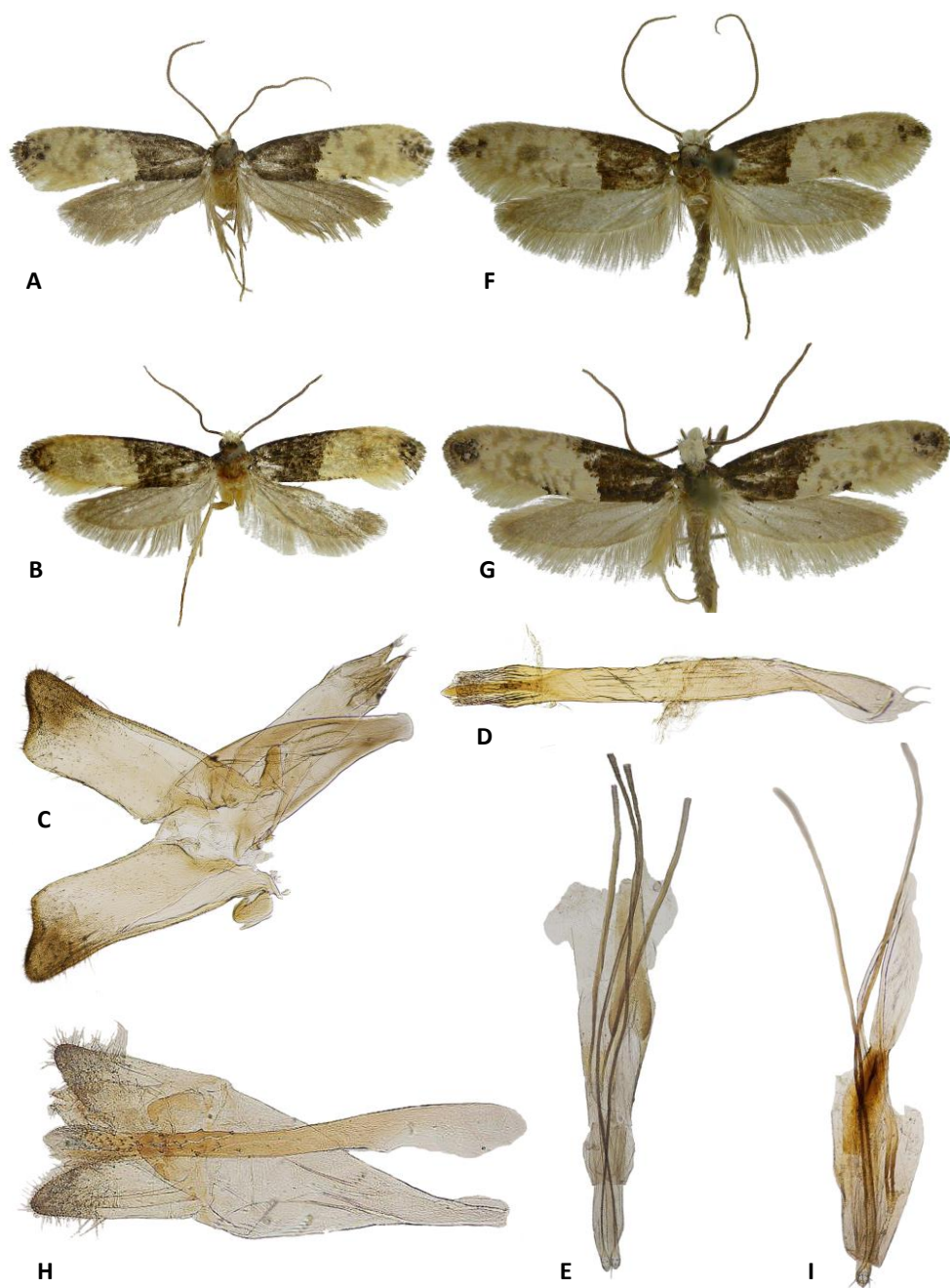


Fig. 1. Comparison of *Trichophaga scandinaviella* (A–E) and *Trichophaga tapetzella* (F–I). **A)** Male (Galanta, 27.VIII.2013); **B)** Female (Galanta, 27.VII.2012); **C–D)** Male genitalia (Galanta, 9.IX.2017); **E)** Female genitalia (Galanta, 27.VII.2012); **F)** Male (Spišská Nová Ves, SNMB); **G)** Female (Praha, SNMB); **H)** Male genitalia (Sp. N. Ves, SNMB), **I)** Female genitalia (Mlyňany, SNMB). Photo R. Štefanovič.